

Centro 3

Assembly Instructions
(with spacer bars)



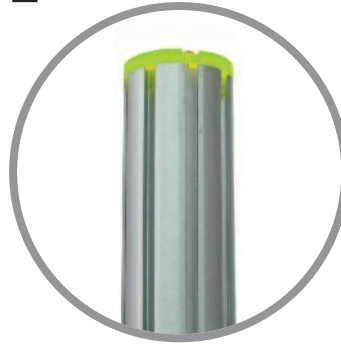
1



Stand base on the ground.
Loosen grub screws and slide both connector bars half way out of groove and retighten.
Repeat for other base posts.
Note: Base plates pre-assembled on kits supplied in carry bag only.

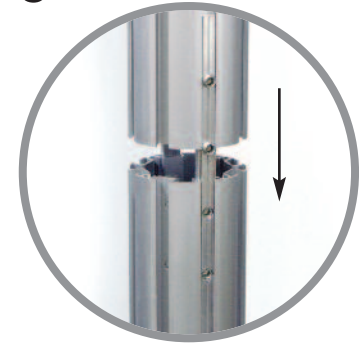


2



The upper 8-way post end cap has two notches which should align with the connector bar grooves shown in stage 3.

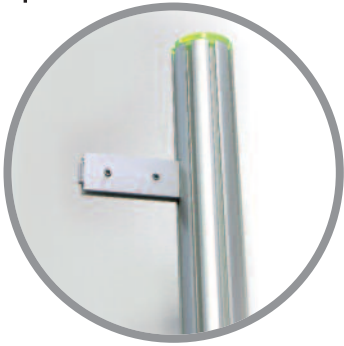
3



Join posts and tighten the grub screws to make assembly secure.
Repeat for other base posts.



4



Slot spacer bars into assembled post approx 150mm from top and base. Tighten the grub screws to lock into place.



5



The side straight vertical graphic rails should now be assembled. Note position of graphic fixing strips, which should align.



6



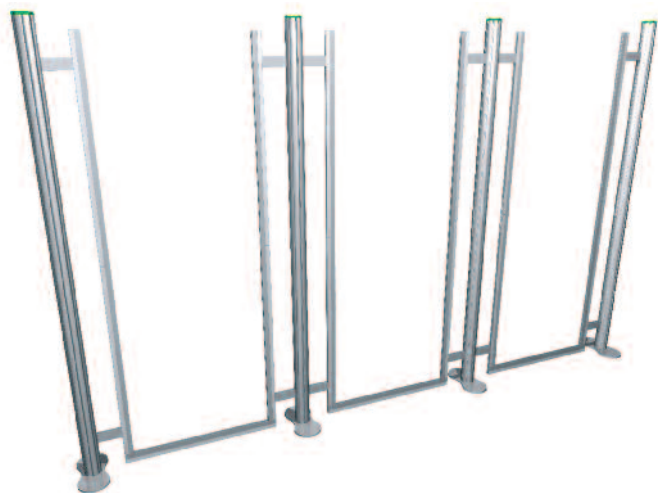
Slot vertical rails onto spacer bars leaving space at bottom for the horizontal graphic rail. Secure in place by tightening grub screws. Single strip line should be on the edge closest to post when viewed from front.



7



Connect first horizontal rails to vertical rails and tighten grub screws as before. Adjust height of vertical rails if necessary to ensure assembly is square.



8



Slot second horizontal rails onto all vertical rails and tighten grub screws.



9



Affix graphic panels to the graphic fixing strips, starting from the top and side, working across the completed system.

